

# LTE-M CELLULAR CONNECTIVITY POWERED BY ARKESSA

## Considering LTE-M for your smart applications?

Arkessa delivers global Long-Term Evolution connectivity (LTE-M) solutions that make it easy to design, deploy and manage your IoT devices securely, efficiently, and at scale.

### Why LTE-M?

- Reduced power consumption
- Up to 10 years' battery life
- Mobility support for non-static applications
- High density deployment
- Better in-building coverage

Δ R K E S S Δ



## IoT at scale with LTE-M

Arkessa offers LTE-M to support massive IoT deployment at a lower cost across the globe. Fantastic for gathering data on the go, LTE-M supports remote applications that require longer battery life and coverage in hard-to-reach locations.

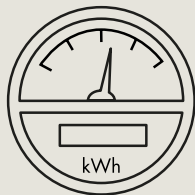
We provide technical and commercial flexibility to support a broad spectrum of smart applications. Order your trial pack today.



By 2025 it is predicted that NB-IoT and LTE-M will account for over half of all cellular IoT connections.



Agriculture



Metering



Assisted Parking



Lighting



Tracking



Smart Cities



Smart Spaces



Wearables

## Get started with LTE-M

Order your Arkessa LTE-M test pack – [paul.donaldson@arkessa.com](mailto:paul.donaldson@arkessa.com)

Find out more: [www.arkessa.com](http://www.arkessa.com)