



---

# arkessa

## SSL VPN CUSTOMER ACCESS GUIDE

---

16 June 2010

Document Version 1.1

1/5

**arkessa**  
COMMANDCENTRE

## 1. Summary

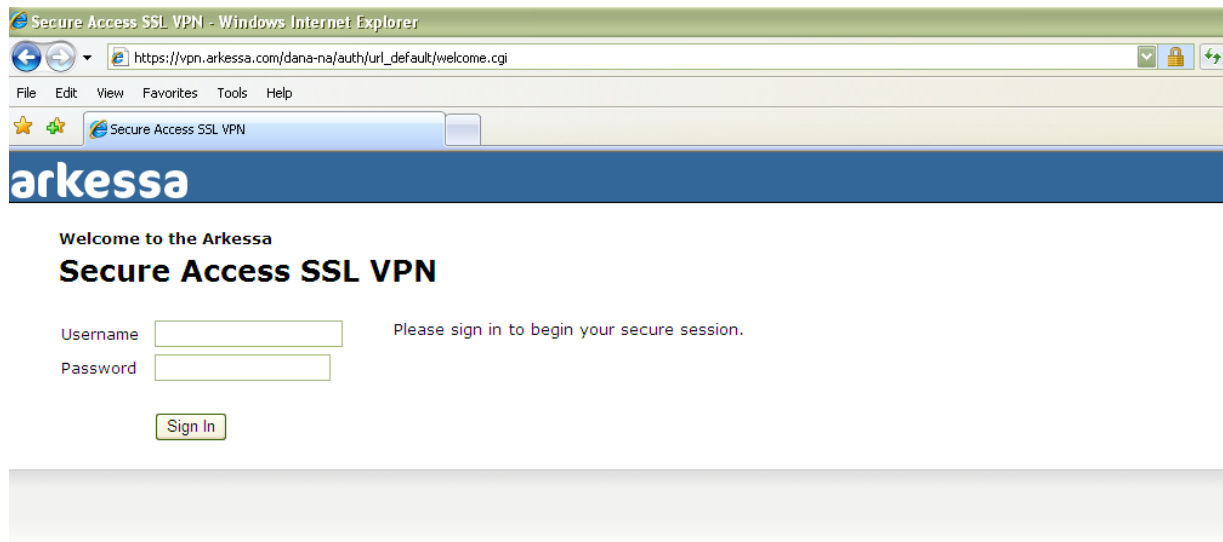
This step-by-step user guide instructs how to access the Arkessa SSL VPN and customer environment.

## 2. Procedure

Via a web browser enter the following URL:

<https://vpn.arkessa.com/>

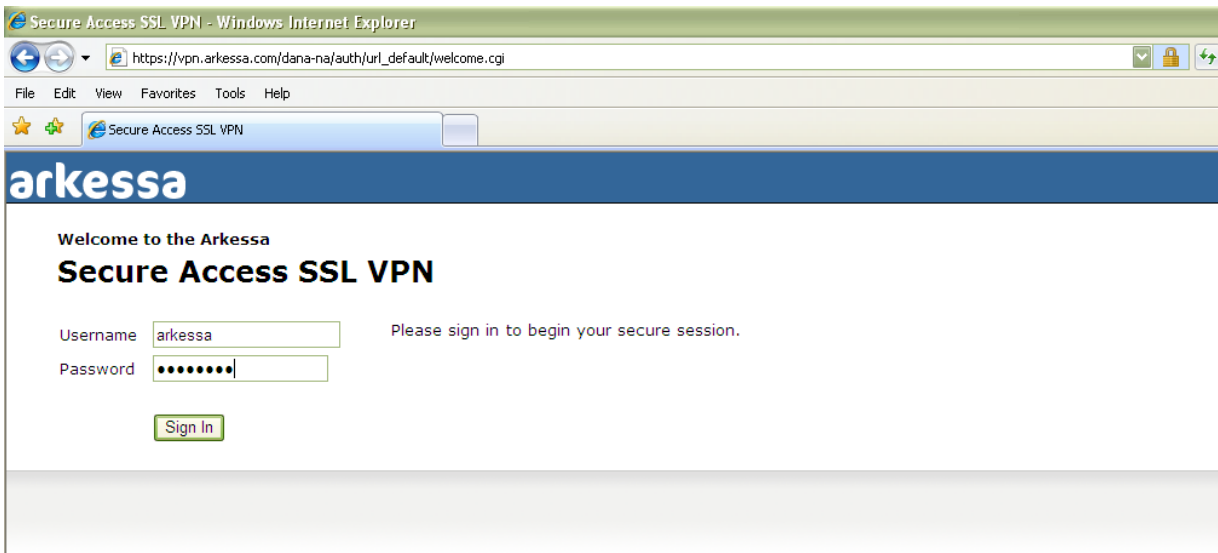
You will then see the following sign in page:



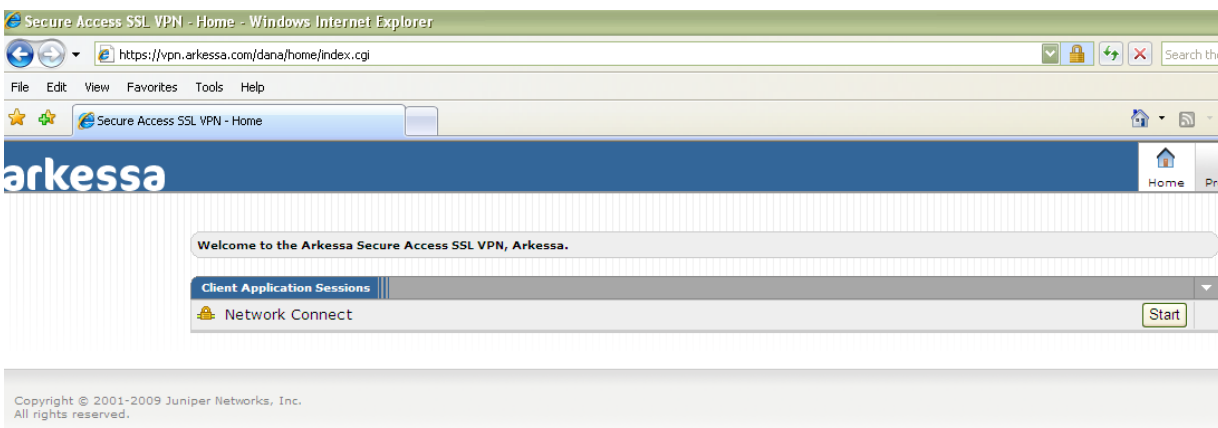
Now enter your username/password as below example:

**Username:** arkessa

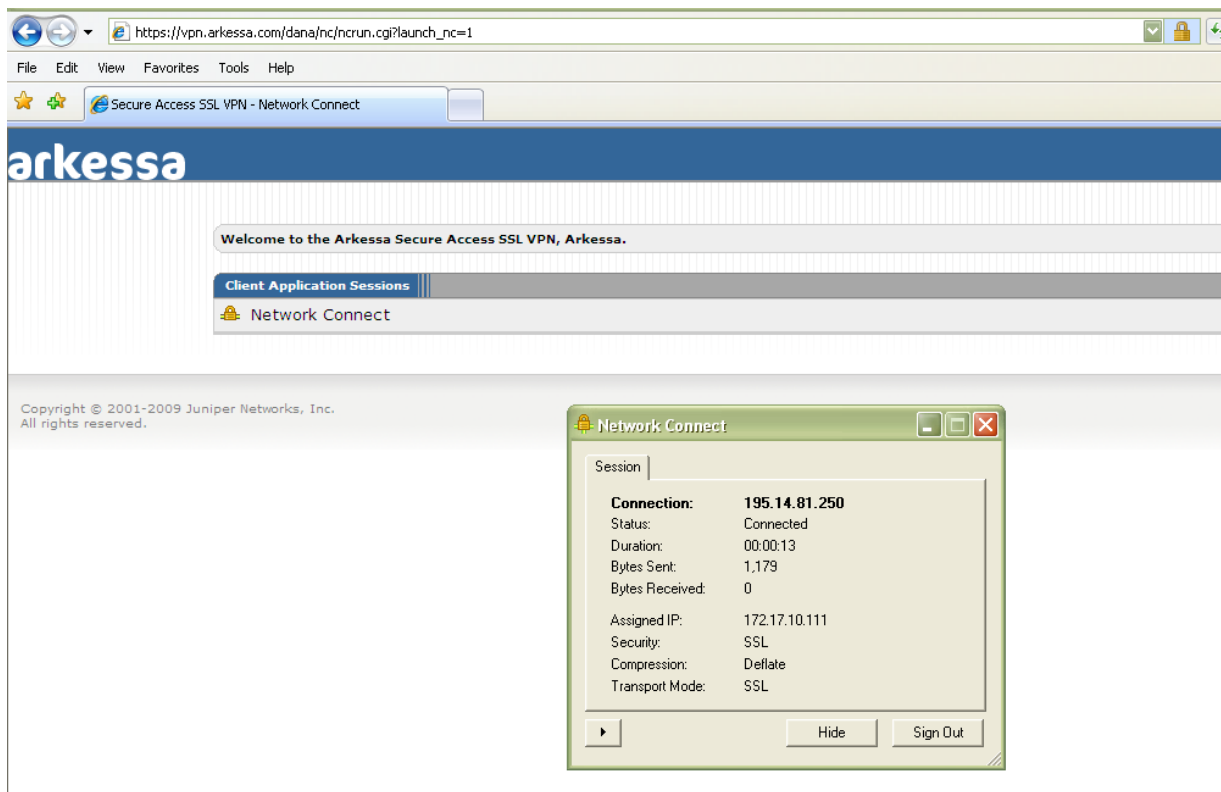
**Password:** \*\*\*\*\*



You have successfully signed into the Arkessa environment and will now see a logo for the Network Connect application as below:



Click 'Start' and the network connect application will run:

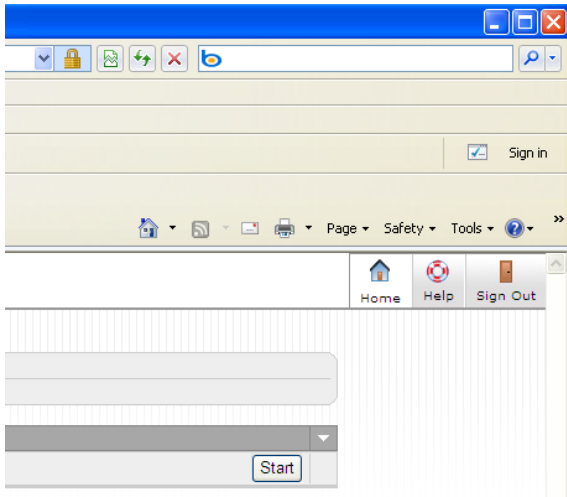


Whilst connected you will see the network connect icon in your taskbar:



You now have access to your resources within the Arkessa environment.

When finished with the SSL VPN please sign out with button at top right of page:



You will then see the session ended message with the option to sign in again:

